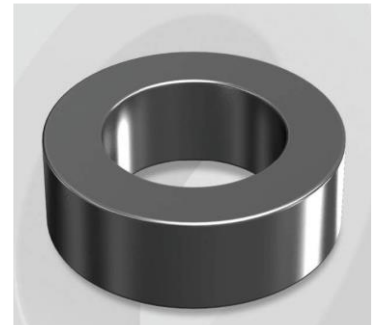


CH378060GT10

Electrical Characteristics

Material	Permeability (μ)	AL \pm 8% (nH/N ²)	DCB (% min) @ 100 Oe	Coreloss (mW/cm ² , max) @ 50kHz, 1000G
High Flux GT	60	56	77.4	180

OD : 378



Core Dimensions

Dimensions		Uncoated		Coated		Color	Packaging
		(mm)	(inch)	(mm)	(inch)		
OD	(Max)	37.80	1.488	38.70	1.524	Black	Box Qty = 120 pcs
ID	(min)	23.20	0.913	22.30	0.878		
HT	(max)	10.00	0.394	11.00	0.433		

Physical Characteristics

Cross Section (A)	Path Length (ℓ)	Window Area (Wa)	Volume (V)	Breakdown Voltage (Vac)
0.693 cm ²	9.40 cm	3.91 cm ²	6.514 cm ³	1,000
0.107 in ²	3.701 in	771,660 cmil	0.3975 in ³	

Winding Information

0% Winding length/turn (cm)		
3.84		
40% winding factor Surface Area (cm ²)		
60.21		
40% Wound Di.(mm)		
OD	ID	HT
44.33	14.61	17.66

Typical DC Bias Performance

